



Do you have questions about palliative care?

Our team is here for you.

If you or someone you know has been diagnosed with a progressive life-threatening illness, we can connect you with services to help you through your journey.



Contact Us

705-623-3176

Monitored **Monday - Friday**

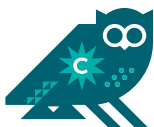
8:00am to 4:00pm

or Call 2-1-1

Multi-Lingual services available 24/7



Proudly supported by:



Couchiching
Ontario Health Team

